

CEREAL BOX PUZZLE

MAKE YOUR OWN PERSONALIZED
PUZZLE IN UNDER 10 MINUTES!

MATERIALS

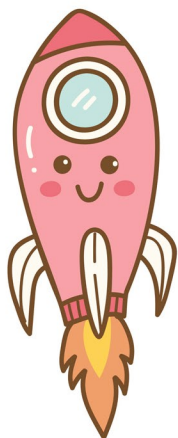
CEREAL BOX

CRAYONS, MARKERS OR PAINT

SCISSORS

CUT OUT ONE LARGE SIZE OF THE CEREAL BOX. PAINT OR COLOR A PICTURE OR ANY KIND OF DESIGN ON THE PLAIN SIDE OF THE CEREAL BOX. LET IT DRY. CUT INTO RANDOMLY SHAPED PIECES -- BIG PIECES FOR YOUNG KIDS OR SMALL PIECES TO CHALLENGE OLDER KIDS. NOW IT'S TIME TO PUT IT BACK TOGETHER!

BONUS: WHAT OTHER ITEMS CAN YOU TURN INTO A PUZZLE?



FOREVER CURIOUS
@ HOME

